

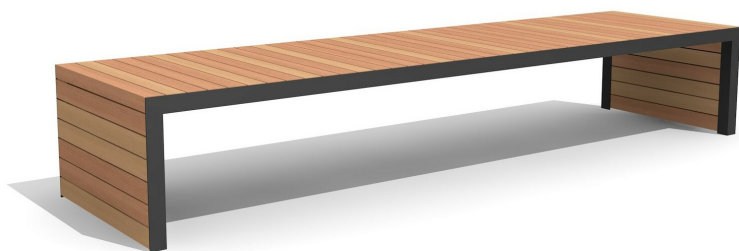


Une nouvelle idée exceptionnelle Robuste et résistant. A visser. Armature en métal zingué et thermo laquage gris argenté ou anthracite. Lattage en bois dur FSC, non traité.

 200 cm  300 cm



Numéro de l'article **MO.14.23.3**
Nom de l'article **Banc sans dossier Linar 300 cm / 80 cm**

Dimension de l'engin 300 x 80 x 50 cm
Fondations 2 pce
Total béton 0.03 m³
Pièce la plus lourde 135 kg
Garantie pièces Lebenslang
détachées

Autres produits de ce groupe



MO.14.21.2
Banc Linar 200 cm



MO.14.21.3
Banc Linar 300 cm

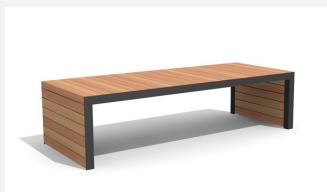


MO.14.22.2
Banc sans dossier Linar 200 cm / 45 cm

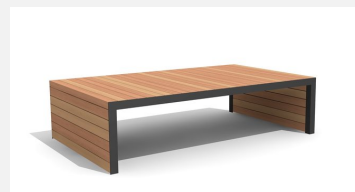




MO.14.22.3
Banc sans dossier Linar 300 cm / 45 cm



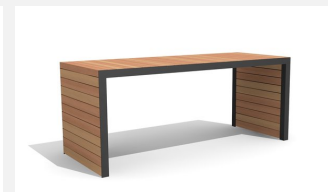
MO.14.23.2
Banc sans dossier Linar 200 cm / 80 cm



MO.14.24.2
Banc sans dossier Linar 200 cm / 120 cm



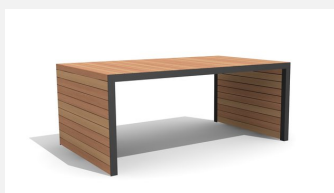
MO.14.24.3
Banc sans dossier Linar 300 cm / 120 cm



MO.14.31.2
Table Linar 200 cm / 80 cm



MO.14.31.3
Table Linar 300 cm / 80 cm



MO.14.32.2
Table Linar 200 cm / 120 cm



MO.14.32.3
Table Linar 300 cm / 120 cm